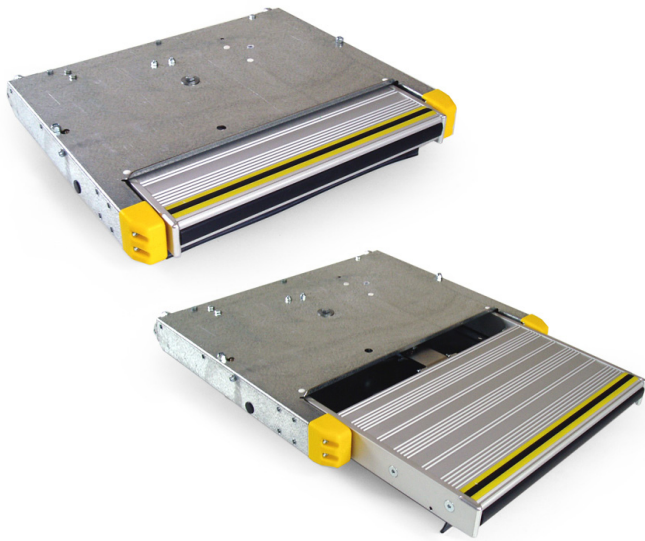




WM450 MANUAL CASSETTE STEP



Step Operation

The WM450 manual cassette step is deployed by a damped gas spring which is activated by simply pushing the tread edge in a small distance with your foot and releasing. Once deployed, the tread is automatically locked in that position by a patented catch system which is activated by the weight of the person standing on the tread. The step is simply stowed by pushing the tread fully in by foot. There are no vulnerable release pedals required to operate the step.

Standard Equipment

- Extruded Anodised Aluminium ribbed tread profile
- High grip Yellow and Black Rubber Strip to tread top edge
- Soft Rubber Cushion Strip to leading edge of tread
- Extruded Anodised Aluminium Side arms
- Rubber Weather Flap to underside of Tread
- High visibility corner mouldings
- Damped gas spring
- Galvanised Steel Case
- Stainless Steel Rails
- Nylon Rollers
- Over-centre latch mechanism
- Patented deployed lock-out mechanism
- Dash warning light
- Limit switch

Options

- Corner Tread Flashing Lights
- Under Tread Lights
- Vehicle Mounting Kits for suitable vehicles

Weight

15kgs

Dimensions

- Tread size deployed: 260mm x 460mm
- Tread edge from sill lip deployed: 315mm
- Tread deployment movement: 205mm
- Minimum projection of case below sill height: 68mm
- Case depth behind sill lip: 365mm*
- Closed tread projection out from sill lip: 110mm*
- Overall width of case: 530mm

*Can be varied – depending on mounting brackets used

Warranty

12 months on site with option at time of purchase to increase for a further year subject to approved service and maintenance.
Complies with all current legislative requirements.
CE marked.

The Company has a policy of continual improvement and reserves the right to change the product specifications without notice

 44(0)1270-874982

Stayco is the registered trade mark and brand name of W.S.H.Taylor Engineering Ltd | Units 36 - 39 Building 10, Radway Industrial Park, Radway Green, Crewe, Cheshire, CW2 5PR | Tel: 44(0)1270-874982, Fax: 44(0)1270-886155