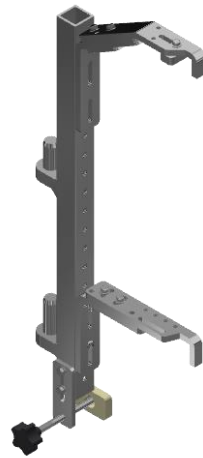




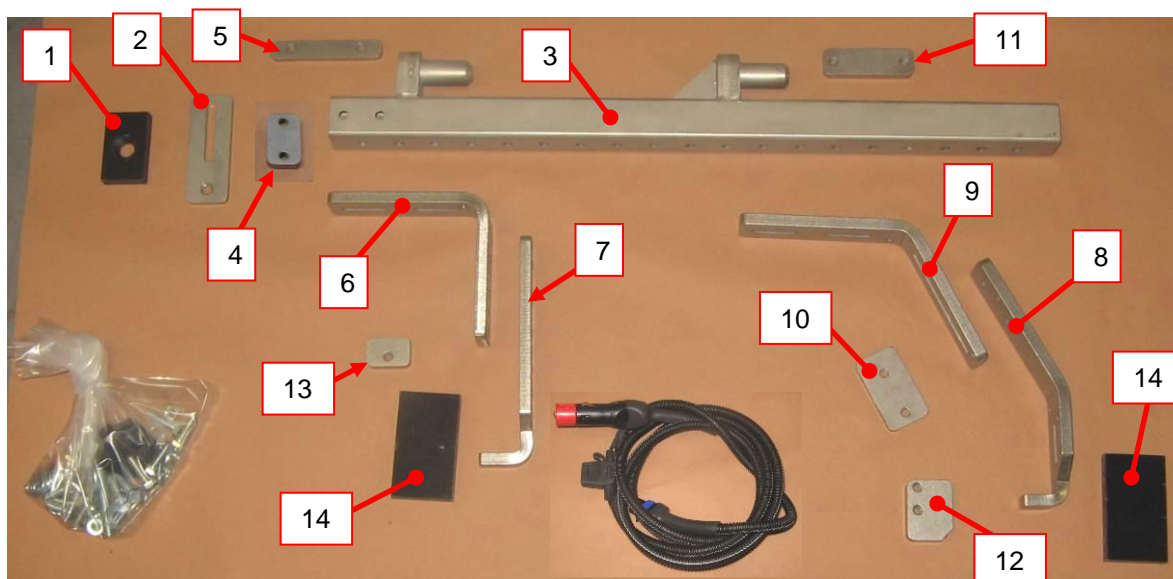
FITTING INSTRUCTIONS

HANDYLIFT HINGE DOOR BRACKET



PRODUCT CODE → SPGHSM

ASSEMBLY MATERIAL SUPPLIED IN THE KIT



CARPENTRY CODES

1 – 060040019 / 2 – 060040018 / 3 – 060040017 / 4 – 060040021 / 5 – 060040020 / 6 – 060040022 / 7- 060040027 / 8 – 060040026 / 9 – 060040023 / 10 – 060040025 / 11 – 060040024 / 12 – 060040028 / 13 – 060040029 / 14 – 060040030

○ Electrical wiring

○ FASTENERS AND COMMERCIAL COMPONENTS BAG CONTAINING:

- NO.1 - VI-5933M08100PG-A2;
- NO.1 - RO-6593IN-24M08---A2;
- NO.1 - DA-7473INM08---PG-A2;
- NO.1 - 020180002;
- NO.15 - VI-5739INM06020PG-A2;
- NO.2 - VI-5739INM06025PG-A2;
- NO.17 - RO-6593IN-18M06---A2;
- NO.17 - RO8842AIN-11M06---A2;
- NO.1 - 010070002;
- Hardware for further fastening (seventh phase step 5)

ASSEMBLY

Before assembling the mobile bracket to be applied to the original hinges of the vehicle door, assess the need, according to the vehicle being worked on, to enlarge the opening of the door itself.

• FIRST PHASE ("LOWER SUPPORT" ASSEMBLY)

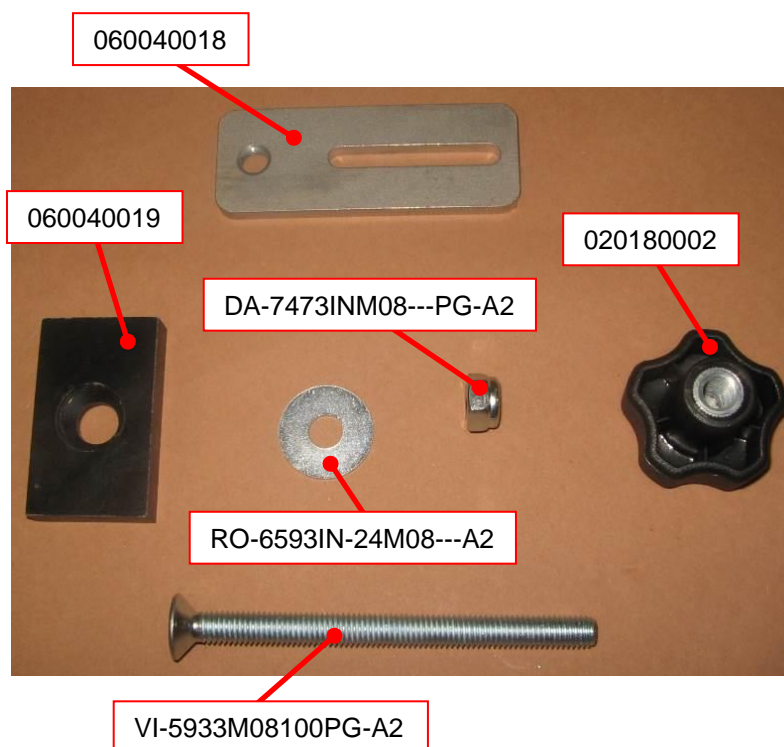
MATERIAL REQUIRED FOR THE FIRST PHASE:

CARPENTRY:

NO.1 – 060040019
 NO.1 – 060040018

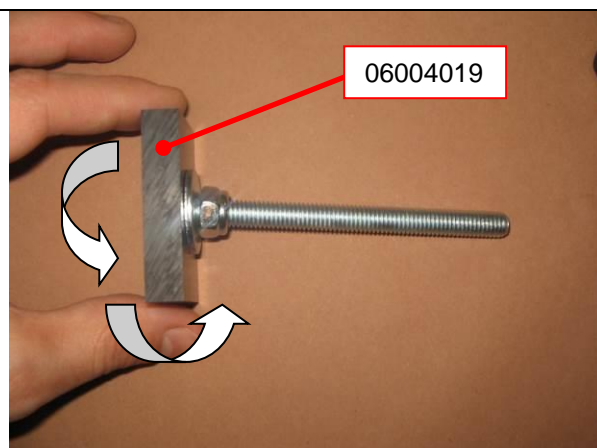
COMMERCIAL / FASTENERS:

NO.1 - VI-5933M08100PG-A2
 NO.1 - RO-6593IN-24M08---A2
 NO.1 - DA-7473INM08---PG-A2
 NO.1 – 020180002



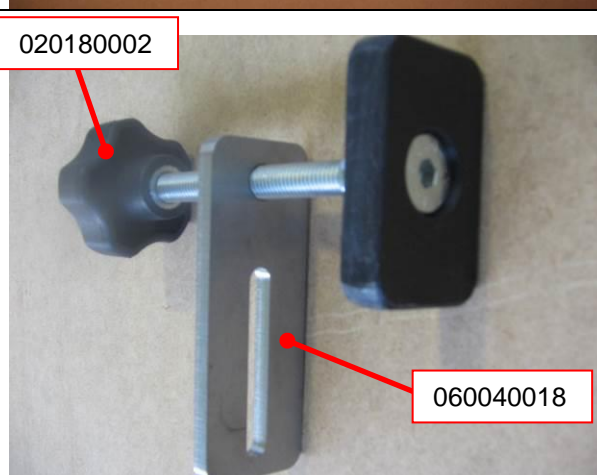
1. Insert the stainless steel M8x100mm countersunk hex head screw into hole Ø11mm flared on detail "1" code 060040019.
2. Subsequently insert the stainless steel Ø8x24mm washer and loosely tighten the stainless steel M8 nut.

N.B.: Leave enough clearance to allow detail "1" to adapt to the surface of the vehicle being worked on.



3. Tighten the M8x100mm countersunk hex head screw in correspondence with the M8 hole on detail "2" code 060040018 and tighten the knob code 020180002 on the latter.

N.B.: The position of detail "2" will be subsequently defined according to the mobile bracket position on the hinges of the vehicle being worked on and on which side (right or left) the hoist will be used.



• SECOND PHASE ("LOWER SUPPORT" FASTENING ON MOBILE BRACKET UPRIGHT)

MATERIAL REQUIRED FOR THE SECOND PHASE:

CARPENTRY:

NO.1 – 060040017

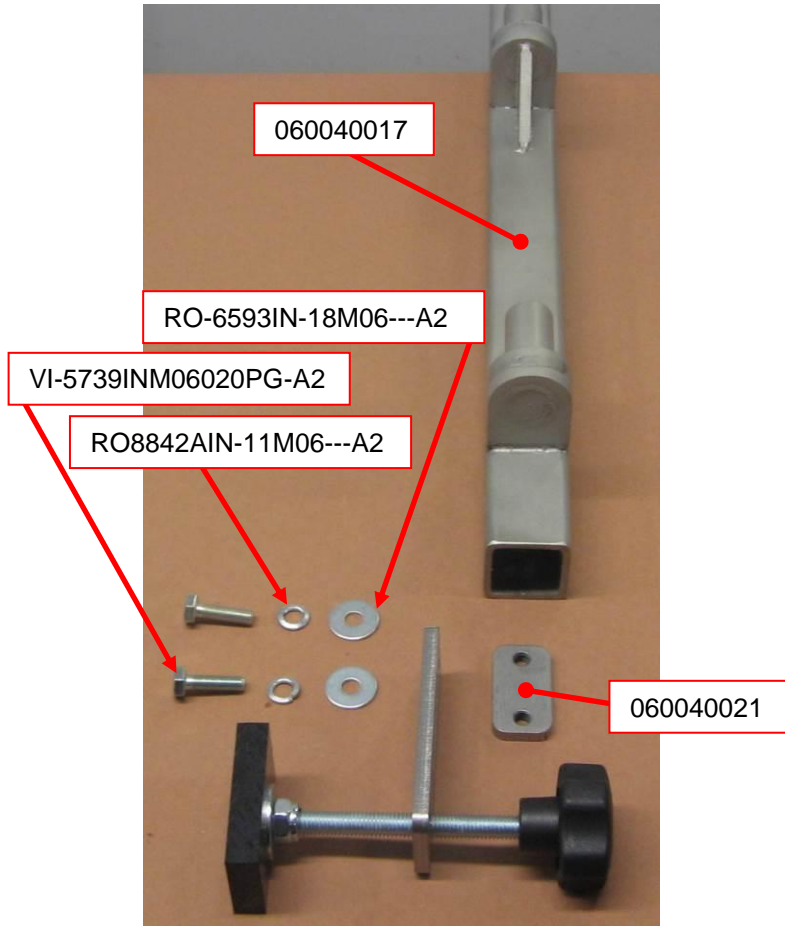
NO.1 – 060040021

COMMERCIAL / FASTENERS:

NO.2 - VI-5739INM06020PG-A2

NO.2 - RO-6593IN-18M06---A2

NO.2 - RO8842AIN-11M06---A2



1. The position of the lower support with respect to the mobile bracket upright will have to be defined based on which side (right or left) the hoist will be used and according to the position to be defined with respect to the hinges of the vehicle itself.

The pictures to the side show some examples of lower support fastening.

Once the position is defined, fasten the lower support on the mobile bracket upright as indicated below.

MOBILE BRACKET FASTENED ON THE VEHICLE'S **RIGHT** SIDE HINGES



Upright **inner** side



Upright **outer** side

MOBILE BRACKET FASTENED ON THE VEHICLE'S **LEFT** SIDE HINGES



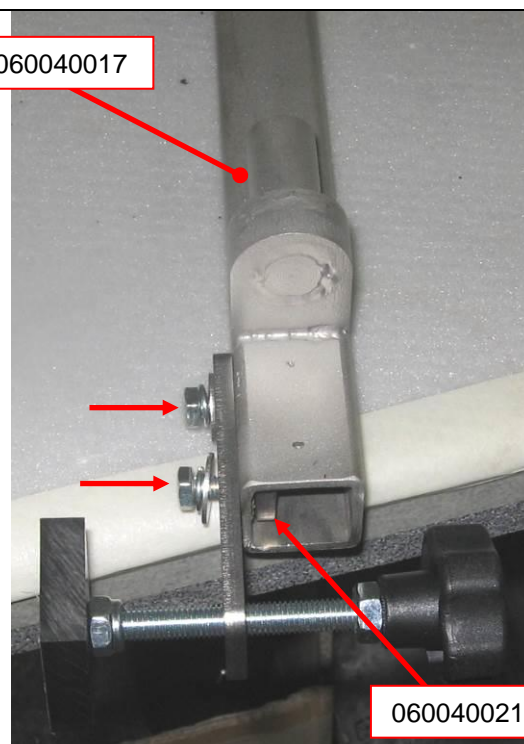
Upright **inner** side



Upright **outer** side

2. Insert detail “4” code 060040021 inside detail “3” code 060040017 (mobile bracket upright) and fasten the lower support, preassembled in the first phase, using the two stainless steel M6x20mm hex head screws + two stainless steel Ø6x18mm washers + two stainless steel Ø6mm notched grower washers.

N.B.: Do not permanently fasten the two M6x20mm hex head screws; the position must be subsequently adjusted.



• **THIRD PHASE (ASSEMBLY AND FASTENING ON “LOWER COUPLING BRACKET” UPRIGHT)**

MATERIAL REQUIRED FOR THE THIRD PHASE:

CARPENTRY:

NO.1 – 060040020

NO.1 – 060040022

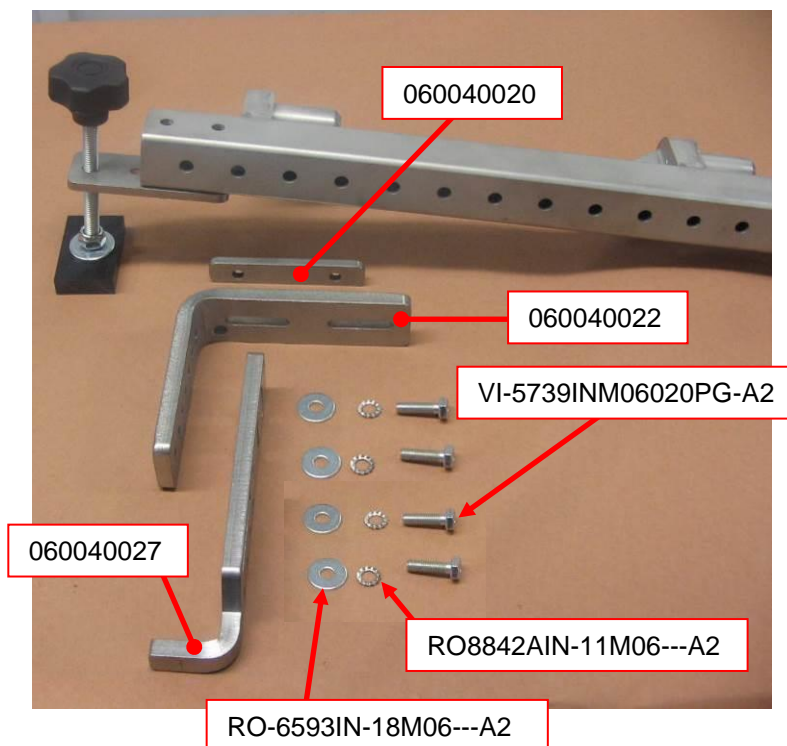
NO.1 – 060040027

COMMERCIAL / FASTENERS:

NO.4 - VI-5739INM06020PG-A2

NO.4 - RO-6593IN-18M06---A2

NO.4 - RO8842AIN-11M06---A2



1. The position of the lower coupling bracket with respect to the mobile bracket upright will have to be defined according to the lower door hinge of the vehicle being worked on.

N.B.: If necessary, grind the bracket coupling tooth on the vehicle's hinge (detail "7" code 060040027 covered in step 3 – next page).

2. Once you have defined the position on the vehicle, insert detail "5" code 060040020 inside the mobile bracket upright and fasten detail "6" code 060040022, in correspondence of the two 6x32mm slots using two stainless steel M6x20mm hex head screws + two stainless steel Ø6x18mm washers + two stainless steel Ø6mm notched grower washers.

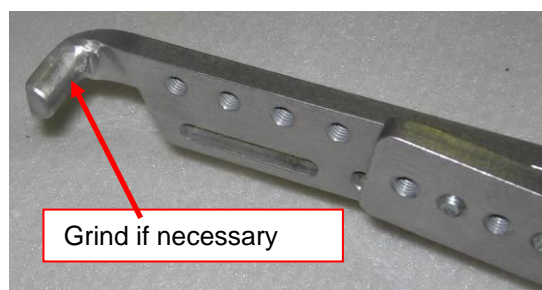
N.B.: Do not permanently fasten the two M6x20mm hex head screws; the position must be subsequently adjusted.



3. Once you have established the need to grind or not the coupling tooth on the vehicle's hinge, fasten detail "7" code 060040027 to detail "6" (covered in step 2), in correspondence of the two 7x20mm slots using two stainless steel M6x20mm hex head screws + two stainless steel Ø6x18mm washers + two stainless steel Ø6mm notched grower washers.

N.B.: Do not permanently fasten the two M6x20mm hex head screws; the position must be subsequently adjusted.

N.B.: In case of installation on the vehicle's LEFT side hinges, detail "7" will be identified by code 060040031.



• **FOURTH PHASE (“LOWER SUPPORT” AND “LOWER COUPLING BRACKET” ADJUSTMENT ON VEHICLE)**

MATERIAL REQUIRED FOR THE FOURTH PHASE:

CARPENTRY:

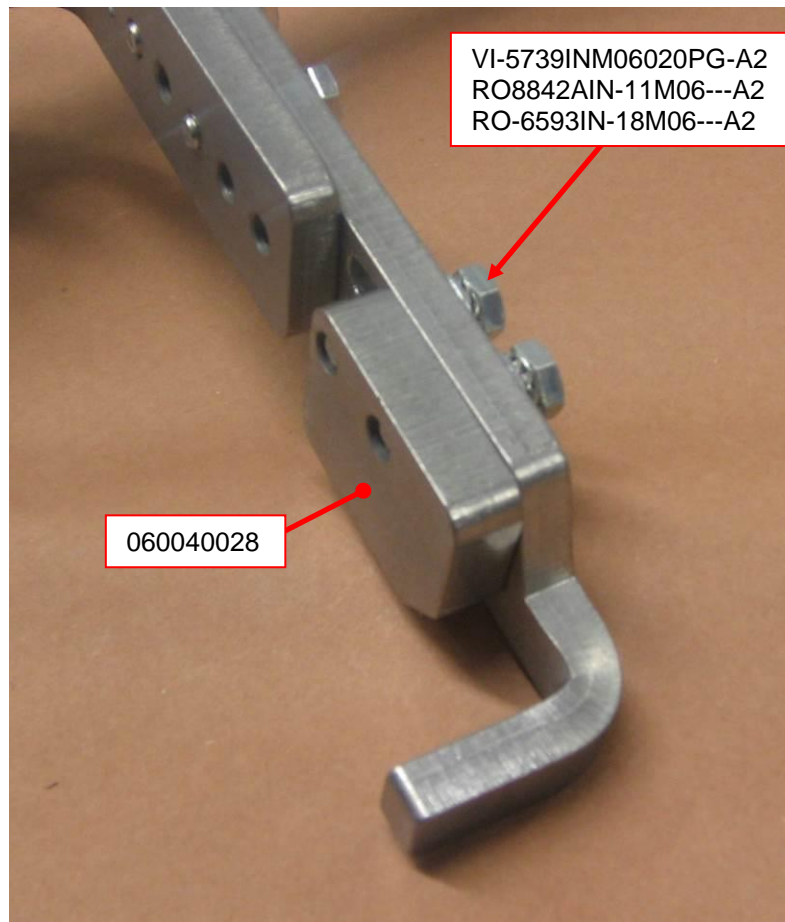
NO.1 – 060040028

COMMERCIAL / FASTENERS:

NO.2 - VI-5739INM06020PG-A2

NO.2 - RO-6593IN-18M06---A2

NO.2 - RO8842AIN-11M06---A2



1. Attach the SPGHSM mobile bracket (pre-assembled as above) to the lower hinge of the vehicle door.

Now adjust the lower support ensuring that detail "1" (code 060040019 covered in step 1 of the first phase) rests, without forcing, on the vehicle's gasket (the height adjustment of the lower support will be defined in step 3).

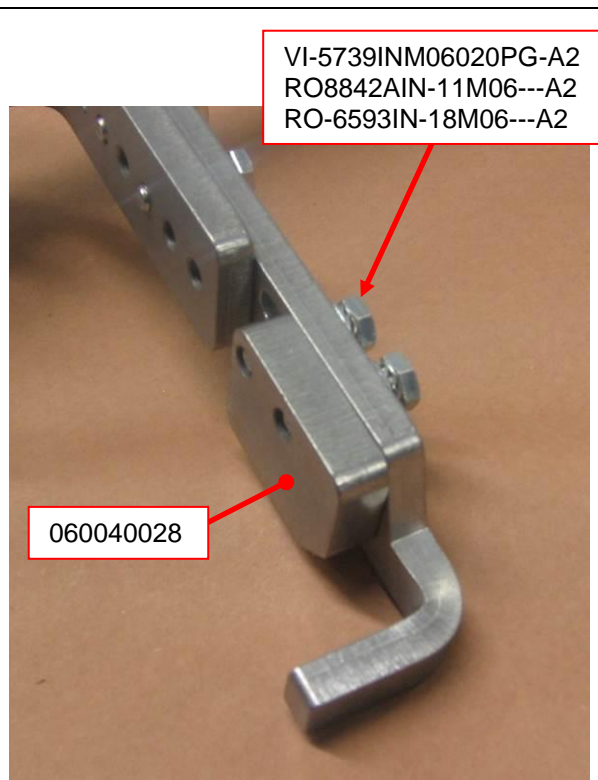
2. Once you have achieved this condition, permanently adjust the height of the coupling bracket to the lower hinge of the vehicle and fasten the four M6x20mm hex head screws on the same bracket (covered in the third phase, steps 2 and 3).

PAY ATTENTION

The pre-assembled SPGHSM mobile bracket must be perpendicular to the floor (check this by using a spirit level or similar).



3. If necessary, in order to improve the support of the lower coupling bracket to the vehicle's hinge, use the block detail "12" code 060040028, after having suitably adapted it to the hinge of the vehicle being worked on, tightening it to detail "7" (code 060040027 covered in the third phase, step 3) by means of two stainless steel 6x20mm hex head screws + two stainless steel Ø6x18mm washers + two stainless steel Ø6mm notched grower washers.
4. Ensuring that detail "1" (Teflon) of the lower support is still resting on the vehicle's gasket (see step 1), without touching the body, fasten the two M6x20mm hex head screws (covered in the second phase, step 2).



• **FIFTH PHASE (ASSEMBLY AND FASTENING ON “UPPER COUPLING BRACKET” UPRIGHT)**

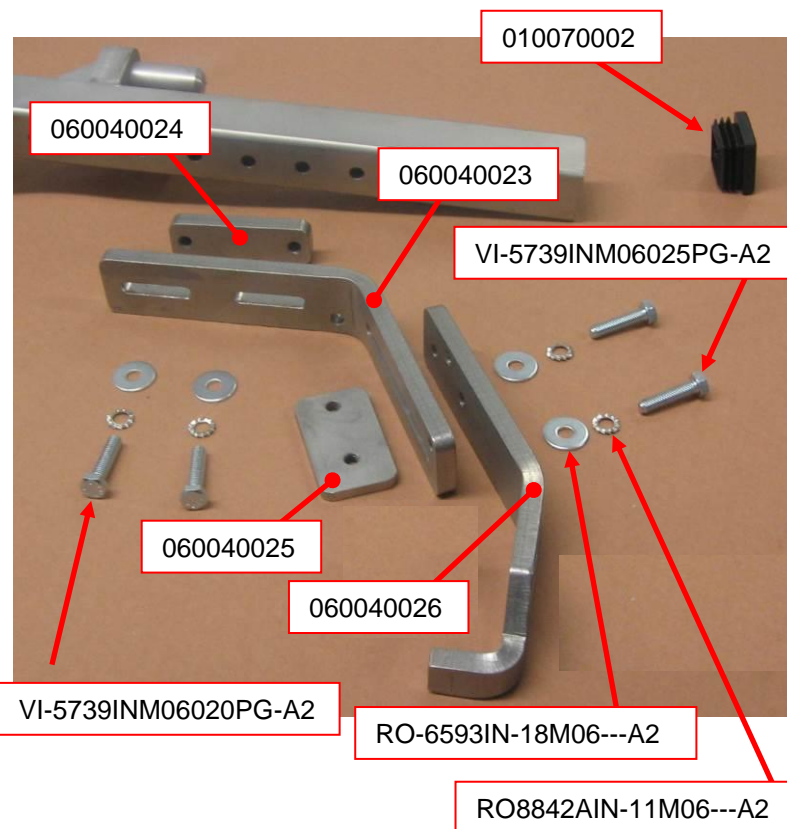
MATERIAL REQUIRED FOR THE FIFTH PHASE:

CARPENTRY:

NO.1 – 060040026
 NO.1 – 060040023
 NO.1 – 060040025
 NO.1 – 060040024

COMMERCIAL / FASTENERS:

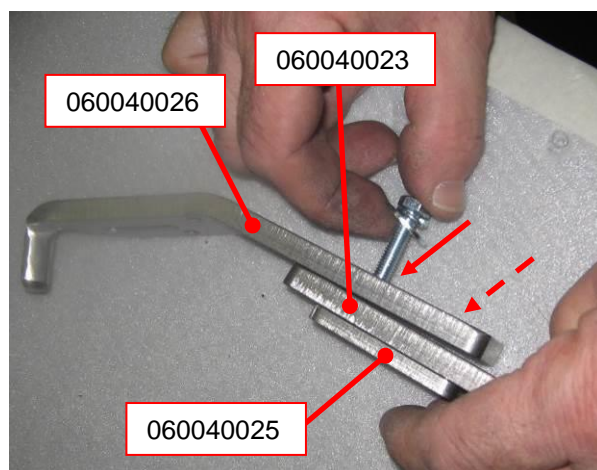
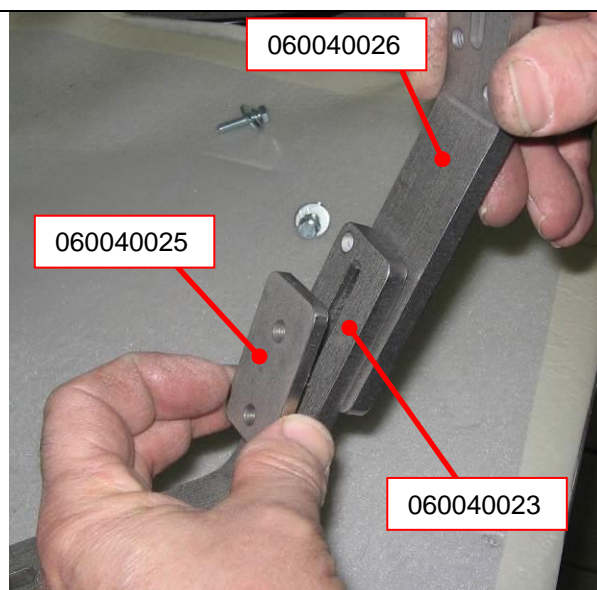
NO.1 – 010070002
 NO.2 - VI-5739INM06020PG-A2
 NO.2 - VI-5739INM06025PG-A2
 NO.4 - RO-6593IN-18M06---A2
 NO.4 - RO8842AIN-11M06---A2



1. Fasten detail "8" code 060040026 to detail "9" code 060040023, in correspondence of the Ø6mm holes and of slot 6x80mm, using two stainless steel 6x25mm hex head screws + two stainless steel Ø6x18mm washers + two stainless steel Ø6mm notched grower washers tightened to detail "10" code 060040025.

N.B.: Do not permanently fasten the two M6x20mm hex head screws; the position must be subsequently adjusted.

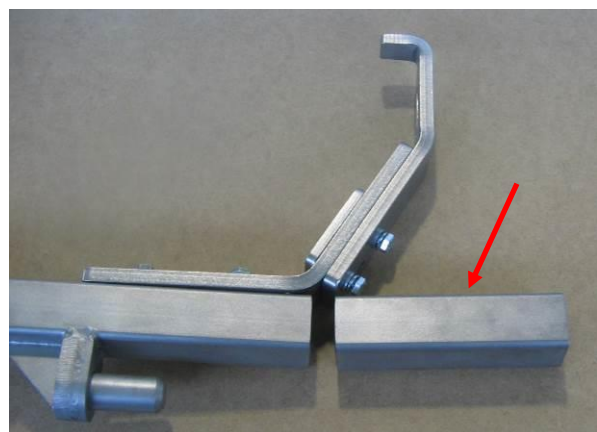
N.B.: In case of installation on the vehicle's LEFT side hinges, detail "8" will be identified by code 060040032.



2. Attach the SPGHSM mobile bracket to the lower hinge of the vehicle door and define the position on the upright of the upper coupling bracket pre-assembled above.

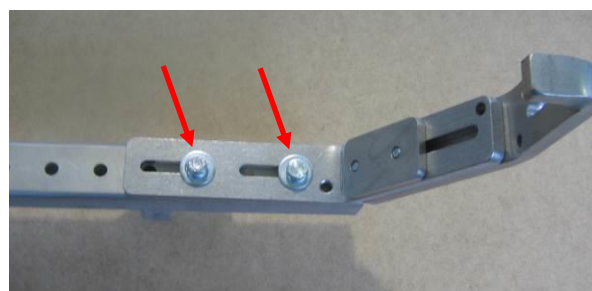
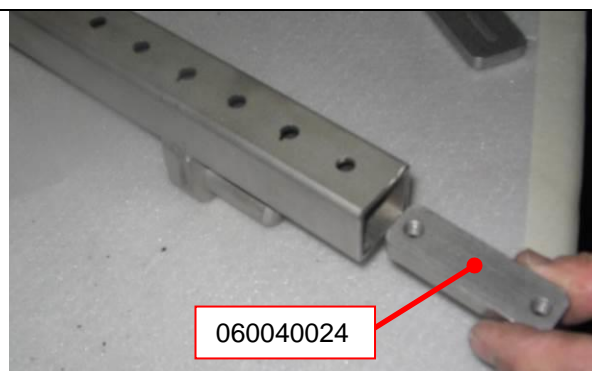
N.B.: After establishing the height of the upper coupling bracket eliminate, by cutting it, the excess material on the SPGHSM mobile bracket upright.

N.B.: If necessary, grind the bracket coupling tooth on the vehicle's hinge (detail "8" code 060040026 covered in step 1).

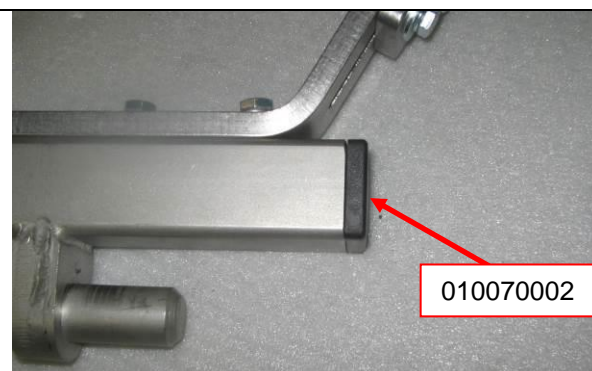


3. Once you have established the need to grind or not the coupling tooth on the vehicle's hinge, insert detail "11" code 060040024 inside the mobile bracket upright and fasten the upper coupling bracket pre-assembled in step 1, in correspondence of the two 6x32mm slots, using two stainless steel M6x20mm hex head screws + two stainless steel Ø6x18mm washers + two stainless steel Ø6mm notched grower washers.

N.B.: Do not permanently fasten the two M6x20mm hex head screws; the position must be subsequently adjusted.



4. Close the upper end open on the upright of the SPGHSM mobile bracket by inserting the cap provided code 010070002.



• **SIXTH PHASE (“UPPER COUPLING BRACKET” ADJUSTMENT ON THE VEHICLE)**

MATERIAL REQUIRED FOR THE SIXTH PHASE:

CARPENTRY:

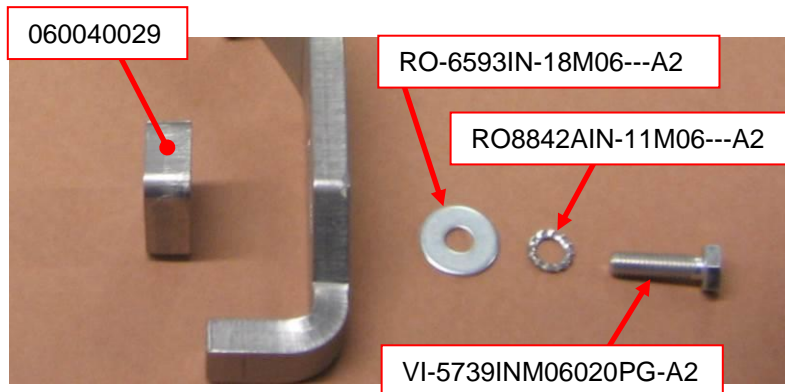
NO.1 – 060040029

COMMERCIAL / FASTENERS:

NO.1 - VI-5739INM06020PG-A2

NO.1 - RO-6593IN-18M06---A2

NO.1 - RO8842AIN-11M06---A2

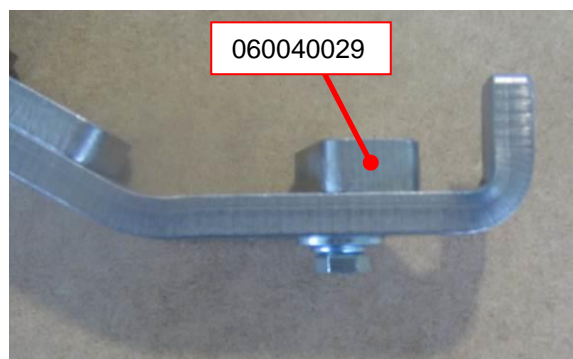


1. Attach the assembled SPGHSM mobile bracket to the vehicle hinges.

Once the height of the upper coupling bracket is defined with respect to the vehicle hinge, fasten the four M6 hex head screws (covered in the fifth phase, steps 1 and 3) on the bracket itself.

2. If necessary, in order to improve the support of the upper coupling bracket to the vehicle's hinge, use the block detail "13" code 060040029, after having suitably adapted it to the hinge of the vehicle being worked on, tightening it to the upper coupling (detail "8" code 060040026 covered in the fifth phase, step 1) by means of a stainless steel M6x20mm hex head screw + a stainless steel Ø6x18mm washer + a stainless steel Ø6mm notched grower washer.

N.B.: Verify that the SPGHSM mobile bracket is still perpendicular to the floor (see step 2, fourth phase); if not, act on the adjustments of the lower support and of the upper and lower coupling brackets.



VI-5739INM06020PG-A2
 RO8842AIN-11M06---A2
 RO-6593IN-18M06---A2

• **SEVENTH PHASE (ADAPTATION TO USE THE SPGHSM MOBILE BRACKET ON VEHICLE)**

MATERIAL REQUIRED FOR THE SEVENTH PHASE:

CARPENTRY:

NO.2 – 060040030

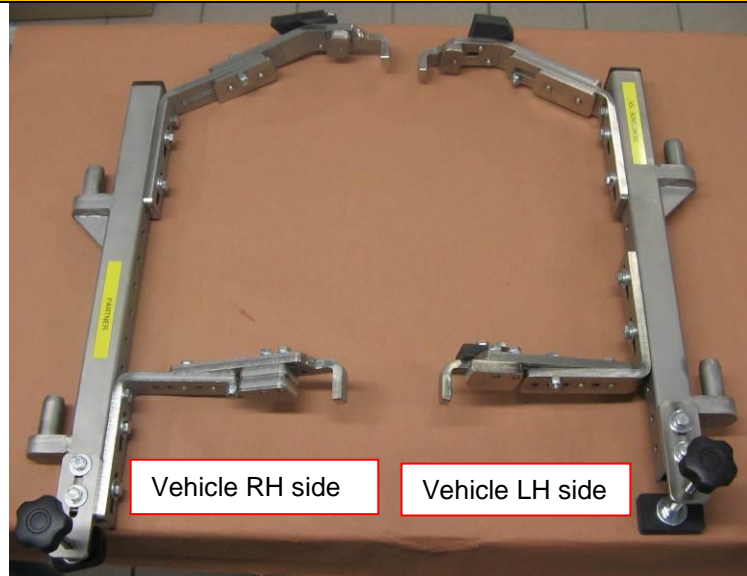
COMMERCIAL / FASTENERS:

NO.4 - VI-5739INM06020PG-A2

NO.4 - RO-6593IN-18M06---A2

NO.4 - RO8842AIN-11M06---A2

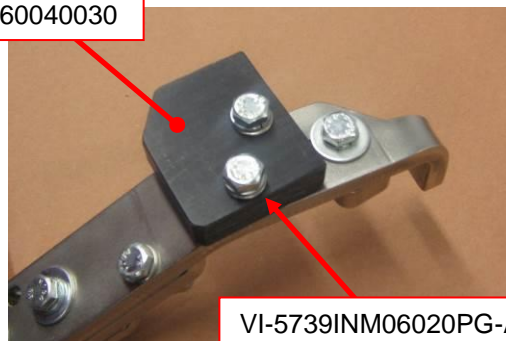
Hardware for further fastening



1. Attach the assembled SPGHSM mobile bracket to the vehicle hinges.
2. Adjust the Teflon pad of the “lower support” against the door gasket so as to eliminate all clearance.
3. Using the two details “14” code 060040030 provided (Teflon), create the side supports of the upper and lower coupling brackets (as per the indicative pictures to the side), so as to avoid that, during use, the SPGHSM mobile bracket can move and/or even disengage.
4. Fasten the latter to the respective brackets using the nuts and bolts provided (four stainless steel M6x20mm hex head screws + four stainless steel Ø6x18mm washers + four stainless steel Ø6mm notched grower washers).



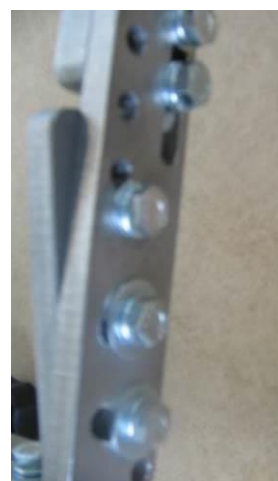
060040030



VI-5739INM06020PG-A2
 RO8842AIN-11M06---A2
 RO-6593IN-18M06---A2



5. In order to ensure, during use of the SPGH EVO hoist for persons, the position of the SPGHSM mobile bracket established during assembly-adjustment-adaptation, create, for each coupling bracket on hinge (upper and lower), an additional fastening point using one of the pre-existing holes on each bracket, adequately piercing and fastening with the provided nuts and bolts.
6. Connect the supplied electrical wiring to the 12V cigarette lighter socket on the vehicle.
7. Engage the SPGH EVO hoist in the relative pins on the SPGHSM mobile bracket, electrically connect it to the electrical wiring and perform the necessary load tests before delivering the vehicle to the end user.



• ILLUSTRATIVE PICTURES (SPGHSM HINGE DOOR BRACKET)

