



*Congratulations on the purchase of the lifter HELP V.
We wish You an advantageous use.
The lifter HELP V is very easy to use and extensively described in these instructions.
Read the use and maintenance instructions carefully before using the vehicle.*

Symbolism



NOTA



PROCEDURE



ATTENTION – very important information

This manual is composed by 6 chapters, chapter 3,4 and 5 are dedicated to the use.

- | | |
|-------------------------------|------------------|
| 1. General information | - Pag. 2 |
| 2. Safety | - Pag. 2 |
| 3. Use | - Pag. 3 |
| 4. What to do if... | - Pag. 9 |
| 5. Emergency system | - Pag. 10 |
| 6. Maintenance | - Pag. 12 |



Power supply 12 V

In compliance with all the characteristics regarding the DIRETTIVE MACCHINARI 2006/42/CE and the COMPATIBILITA' ELETTROMAGNETICA 2014/30/CE.

Instructions based on a standard configuration, possible changes can be made according to the customer's requirements and the characteristics of the vehicle.

Handytech reserves the right to change the product without any forewarning.

1. General information

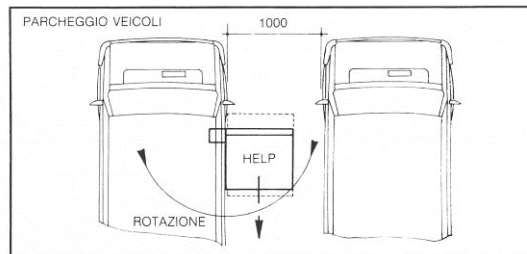
HELP V is a light and compact lifter which, installed near the sliding door, allows to lift a person with his wheelchair, with a maximum load of 200kg (250 kg optional).

All the operations are carried out by a remote control.

The lifter platform allows to lift the person on the wheelchair from the ground to the floor of the vehicle, facing a drop of maximum 700mm. Then, thanks to the rotation of the platform, it allows the entrance into the vehicle. Its particular structure allows to load the person on the wheelchair with a lateral space of 1000mm.

With one easy operation it is possible to close the platform of the lifter and then to leave free the space near the door .

Moreover, HELP V is provided with a manual emergency system.



2. Safety

The system must only be used for the purposes it was created for; any other use is considered as improper.

CARROZZERIA 71 s.r.l. is not liable for any damage caused by incorrect system use.

Explain how HELP V works to anyone who has to work on your vehicle (car dealer, repair centre, mechanic, etc.), and also to all those who use it.

In these cases disconnect the whole system.



If it is necessary to effectuate maintenance operations and repairs to the vehicle, we advise You to give to the operator the telephone number of the installer of the system for further indications.



It is advisable, after 2 years, in collaboration with Your local Handytech Centre, to check the status of the whole system and maybe to replace some parts.

Moreover, we remember to you, that out of the warranty period, the maintenance program is at Your discretion and risk, but the advice is to follow it carefully, because the negligence could cause malfunctions of the system and could create dangers during the utilization of the device.

Maintenance operations of the device during the warranty period and out the warranty period are to be borne by the customer.



The manufacturer guarantees the product for 24 months, only if the maintenance operations have been implemented by an authorized Handytech Centre.



It is advisable to use the lifter HELP V on a flattest terrain possible and to avoid muddy and gravel grounds

During the use it is necessary to check that near the lifter there are not people, animals or objects that could interfere with the movement of the lifter.

3. Use

- Before starting every operation, engage the handbrake of the vehicle.
- Completely open the sliding door and check that the space available allows the rotation and the way down of the lifter and that there is the possibility to move the wheelchair.
In some cases, at installer's discretion, it can be installed a limit switch on the door sill of the vehicle that inhibits the working of the lifter with the closed door (*Photo 1*).

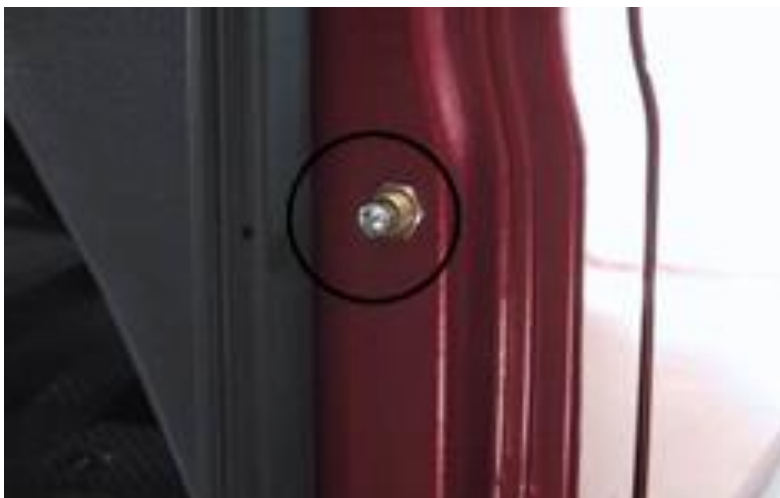


Photo 1

- Turn the battery master switch in mode ON (*Photo 2,3*).



Photo 2 deactivated



Photo 3 activated

- If the lifter is installed on a vehicle used by a person that will be the driver, the battery master switch can be left in mode ON; it must be deactivated only if the vehicle is stopped for a long time.

Turning the battery master switch in mode on will activate the red LED on the control unit box (Photo 4).



Photo 4

- If the two half of the platform are closed, it is necessary to place vertically the front part lifting it until getting a 120 degrees angle with the other half, and then take it back to about 90 degrees with the platform, as shown in Photo 5,6,7.



Photo 5 closed platform



Photo 6 120° degrees



Photo 7 90° degrees



The opening operation of the lifter cannot be carried out with the two half of the platform closed because it can create a collision with the door on some type of vehicles (*Photo 8*).



Photo 8

- Take the remote control from the hook and, once checked that near the lifter there are no people, animals or objects, start the opening operation (*Photo 9, 10*).



Photo 9

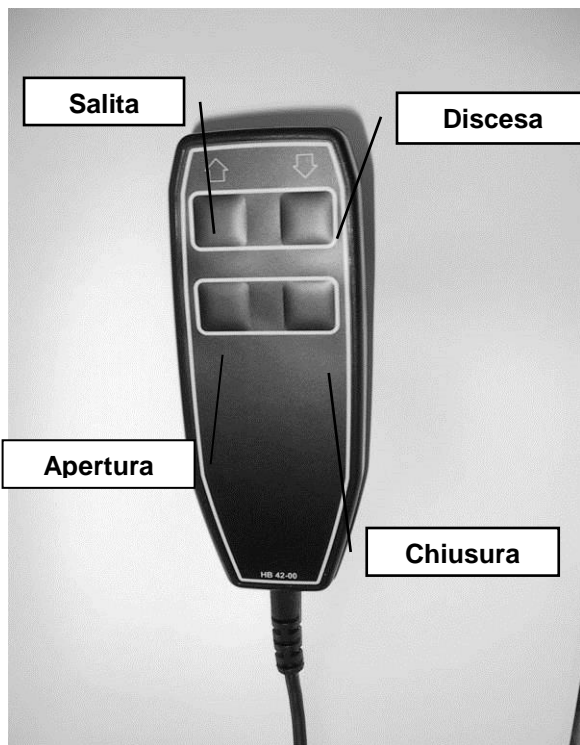


Photo 10

- Push the way up button and keep pressed until the lifter will stop. Then push the rotation button which activates also the bumper, paying attention to the completely opening of the door to avoid a collision of the platform with this last one.

Once the rotation is completed, push the way down button until the platform touches the ground. This operation will be automatically interrupted by the limit switch.



Before starting the way up it is necessary to check that the wheelchair and the person together do not exceed the 200 kg (250kg optional) that is the maximum load of the platform.

- Go on the platform from the rear part of the vehicle towards the front part, so that the wheels of the wheelchair press the front part of the platform, overtaking the resistance of the springs and bringing the front half on the same level of the rear half (*Photo 11, 12*).

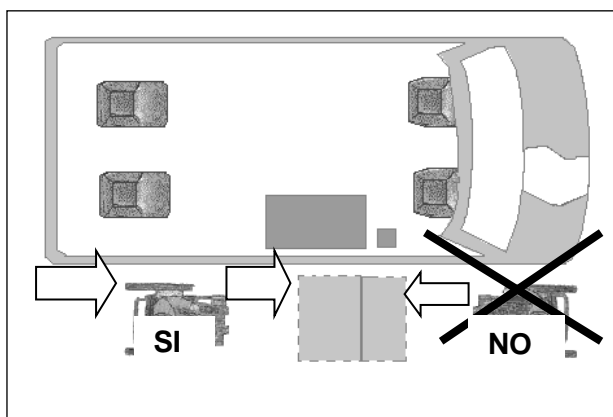


Photo 11



Photo 12

Complete the operation making the wheels of the wheelchair touch the safety stop on the front half of the platform and then block the wheelchair using the original brakes (*Photo 13*).



Photo 13

- Check the right positioning of the wheelchair on the platform, push the way up button until the position of maximum lift and then push the button to close the platform, paying attention to a possible collision of the rear right wheel with the door (due to an incorrect positioning of the wheelchair on the platform) (*Photo 14, 15*).



Photo 14 correct positioning



Photo 15 incorrect positioning

Moreover, on some type of small vehicle, it is necessary to pay attention to the possibility of the collision between the head of the person and the upper part of the door sill: in these cases lower or bend the head during the rotation.

- Once the rotation is completed, the bumper will deactivate itself. Push the way down button until the platform touches the floor of the vehicle, then go back with the wheelchair slowly: during this phase the front part of the platform will lift through the springs. This operation must be carried out with attention to avoid the kickback of the flap on the feet of the person.

- If necessary, close the front part of the platform by lifting the mechanical unblocking knob fixed on the upright, taking with the other hand the flap towards yourself first, and then closing it on the rear part of the platform (*Photo 16,17,18*).

*Photo 16**Photo 17**Photo 18*

- Carefully block the wheelchair and the person inside the vehicle using the proper anchorage systems.
- Deactivate the battery master switch taking it back in the mode OFF in order to avoid any interference with the electrical parts of the vehicle (*Photo 19*).

*Photo 19*

- Close the sliding door.



Check the right positioning and the right anchorage of the wheelchair and of the passenger inside the vehicle.



Obviously, to carry out the unloading operation, follow the previous instructions in a reverse way.

WHAT TO DO IF ...1. The lifter does not move when pushing the way up button

- ✓ Check that the battery master switch is in mode ON.
- ✓ Check the right connection of the connector of the remote control (*Photo 20*).
- ✓ Check the integrity of the maxi fuse 20 A in the engine compartment of the vehicle (*Photo 21*).
- ✓ Check the integrity of the fuse 1 A in the control unit box.

*Photo 20**Photo 21*

If the problem is already existing, carry out the following operations in emergency conditions.

4. Manual emergency system



THIS OPERATION CAN BE CARRIED OUT ONLY ONCE, SO IT IS COMPULSORY TO CONTACT AS QUICKLY AS POSSIBLE THE NEAREST HANDYTECH CENTRE.

It is necessary to unscrew anticlockwise, using a L hex key 6mm, the cap located on the electric actuator. Remove it (*Photo 22*).

Then use one more time the 6mm hex key (*Photo 23*).



Photo 22



Photo 23

Rotate clockwise to carry out the way up of the lifter, and anticlockwise for the way down. Pay attention to the limit switches: in this condition they are non working, so it is necessary to stop the lifter in the desired position (this will not be done automatically).

To manually rotate the platform, it is necessary to unblock the electric motor that leads this last one; use a 17mm pipe key and insert it in the M10 bolt only after taking out the black cover of the nut which fixes the electric motor to the lower plate of the lifter (*Photo 24,25*).

*Photo 24**Photo 25*

Rotate the key anticlockwise and unscrew the bolt. Done this it will be possible to manually open and close the lifter.

Differently from the traditional working, the lifter will not be held in position by the electric motor, so it will be necessary to manually hold it in a completely opened or closed position to carry out the way up and the way down.

This emergency operations must be carried out only once or solely the needed times to unload the wheelchair at that moment. Do this operation carefully not to create dangers for the person transported. Then contact the nearest Handytech Centre.



If your system has a problem which is not listed, contact the nearest Handytech Centre.

MAINTENANCE

First check: 1500 km or 3 months

- Check the tightening of the fixing bolts of the platform
 - Check the tightening of screws and bolts of the lifter
 - Check the lubrication of the sliding points
 - Check the connection between the battery and the lifter, paying attention that there are not oxidations on the contacts
 - Check the electric board of the system
 - Check the operations of the lifter and the correct working of the limit switches that limit the operations
 - Check the working of the emergency system
 - Check the probable mechanic failure of the lifter
 - Check the right working of the actuators, paying attention to backlashes or noises during the movements
- Check the right working of the unhook handle of the front half of the platform

Controlli da effettuarsi a 12, 24 mesi e annualmente

Repeat the check done in the first check.

NOTA BENE:

After 2 years go to your usual Handytech Centre to have the system state checked and to replace any parts that need to be replaced.

When the guarantee ends the maintenance program is at your own discretion, but our advice is to follow it scrupulously because neglect can cause system faults, problems and create dangerous situations while driving.

The device maintenance interventions, both when covered by guarantee and not, are at the full charge of the client.

WARRANTY: 24 Months

SPACE FOR THE INSTALLER

Notes of the installer

Main fuse position

Battery master switch position

Control unit box position

Further information

PER STAMPA:

LAY OUT

		RETRO	
SX	DX	SX	DX
12	1	2	11
10	3	4	9
8	5	6	7