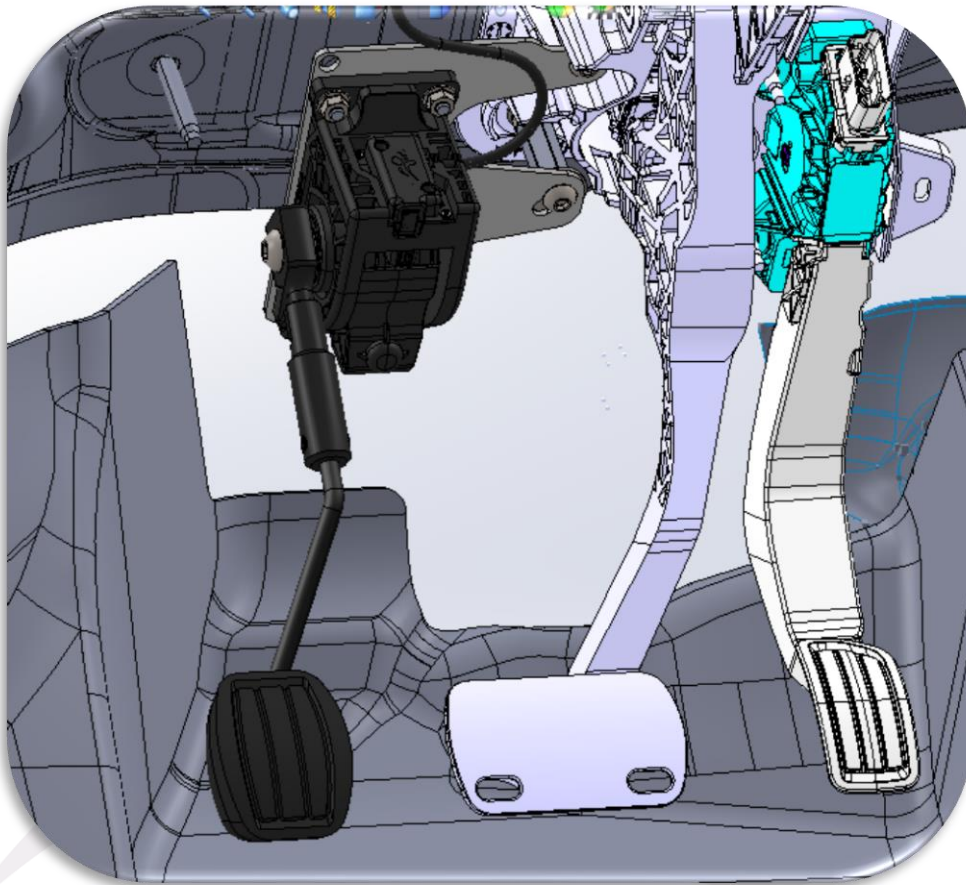


ACCELEG

User manual



08/09/2022

Table of Contents

| | |
|---|----------|
| PRESENTATION | 4 |
| THE PLUSES | 4 |
| SAFETY | 4 |
| INSTALLATION | 4 |
| CONFORMITY | 4 |
| HOW TO USE | 5 |
| ACTIVATION | 5 |
| SAFETY | 5 |
| BACK TO RIGHT PEDAL | 5 |
| DEACTIVATION OF THE SPEED LIMITER | 6 |
| MOUNTING / DISMOUNTING OF THE PEDAL | 6 |

Presentation

Always in search of innovation to guarantee driving assistance systems at the cutting edge of technology and at the forefront of the requirements in terms of safety and comfort of use, **LEFTDIS** gives birth to a new generation solution: **ACCELEG**.

For drivers without the use of their right leg, **ACCELEG** offers an alternative to the right foot accelerator pedal: a left foot accelerator pedal completely redesigned for an unmatched experience.

Compatible with all vehicles with an electronic accelerator pedal from more than 24 car brands, **ACCELEG** combines installation and using simplicity with driving comfort, safety and durability.

Its technology, for which a European patent request is in process, meets the requirements of 10 years of driving, or 300,000 km.

The pluses

- Universal ¹
- Design & Ergonomics
- Easy to install and use
- Removable
- "Kick-down" (hard point at the end of the pedal stroke) to deactivate the speed limiter ²



Safety

- Acceleration cuts out when braking is applied
- Right accelerator pedal is deactivated
- Original accelerator configuration resumes each time when the engine stops

Installation

- Simplified installation
- Installation on any vehicle with automatic transmission and an electronic accelerator pedal
- Easy to remove and reinstall ³

Conformity

- Complies with ECE R10 Rev.6

¹ **Compatible with 99.9% of the vehicles studied at Sojadis**

² **Depending on vehicle**

³ **May require replacement of some parts**

How to use

Activation

When the vehicle is started, **ACCELEG** is inactive (left pedal disabled).

To activate **ACCELEG**, please follow the steps below:



Recommendation:

- Do not operate the left pedal when switching on the vehicle, or pressing the push button (to allow the ACCELEG to initialise correctly).

1. Start your vehicle
2. Press the button within 30 seconds of starting the vehicle. The illumination of a red light confirms this selection. The left pedal is now activated and the right pedal is disabled.

Left pedal disabled



Left pedal enabled (after pressing the button)



N.B.: After 30 seconds, if the left pedal is not activated, it is necessary to restart the vehicle and repeat the previous steps.

Safety

When driving with the left foot, the acceleration is automatically cut off when braking.

Back to right pedal

To return to the vehicle's original pedal, it is necessary to switch off the ignition and then restart the vehicle.

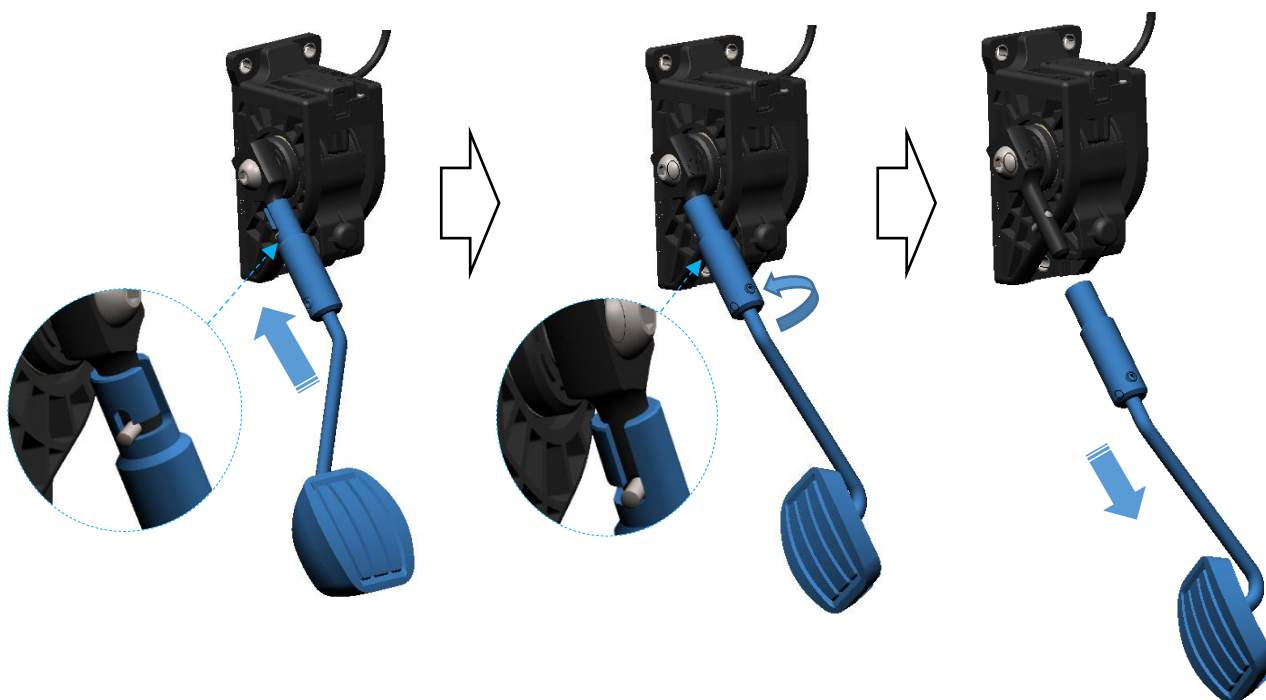
Deactivation of the speed limiter ⁴

To deactivate the speed limiter (when overtaking for example), simply press the ACCELEG pedal fully down.

If you wish to activate the speed limiter again, you must do so via the vehicle's original controls.

Mounting / dismounting of the pedal

The ACCELEG pedal is removable, see example below..



⁴ Depending on vehicle



CRÉATEUR d'aides à la conduite

NU-ACCELEG-1.0-FR.docx