

AUTO EASE

POWER LIFT GATE

MANUAL



For
Citroën Berlingo
2018-24

This power lift gate kit for Citroen Berlingo support automatic trunk open/close control by using 1) original remote control 2) dashboard/front button 3) tailgate/rear button 4) Foot sensor – optional













NOTICE

1. Check parts & quantity in the accessories table. Must use the brackets/screws provided by us if not stated
2. Shut down engine before installation. Product must be installed by qualified installers
3. Strut assembly contains high pressure part, self-disassembling the strut is prohibited
4. Make protections on dashboard, plastic trims, and metal surfaces, to prevent scratches during installation
5. Secure all the cables/wires in vehicle to prevent connection getting loose in driving
6. Installation time depends on many factors, usually it will take around 3 hours, please follow manual patiently





ATTENTION

1. This liftgate kit is designed for standard factory rear door panel, modifications with extra weight may not be supported
2. Bench-test is forbidden, liftgate kit must be installed in vehicle before powered testing
3. Once power struts are installed, manually & gently lift rear door up/down to make sure they can be moved smoothly, and without interference with trunk & door panels
4. Do not insert power plug to control box until whole installation procedures are completed
5. Make sure there is backlight on our rear button once power is connected
6. Initialize system after installation - manually lift tailgate to desired height, keep on pressing our rear button 3 second until a beep is heard, click our rear button to close, when door is fully closed with a beep, it means the system is initialized and ready for use

PART LIST

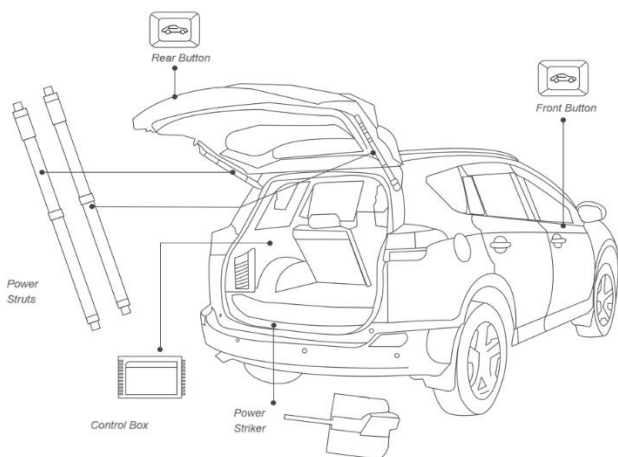
			
Power Struts x2	Control Box x1	Power Cable x1	Lock Adapter x1
			
Power Striker x1	Power Striker Cable x1	Strut Cable Extension x1	Rear Button Cable x1
			
Front Button x1	Rear Button x1	Trunk Bracket X2	Door Bracket X2

TOOLS (not included)

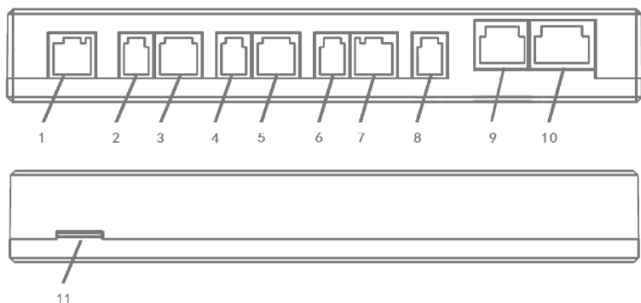
			
Trim Remover x1	Spanner x1	Cable Route Puller x1	Electric Tape x1

REMARK: Pictures for reference only, they may look different or not reflect actual product while products being updated time to time. Autoease keep the right to update appearance & design without notifications. IGNORE the CAN H and CAN L two wires.

SCHEME



CONTROL BOX



- | | |
|-----|---------------|
| 1 | Power |
| 2/3 | Left Strut |
| 4/5 | Right Strut |
| 6/7 | Power Striker |
| 8 | Lock Adapter |
| 9 | Front Button |
| 10 | Rear Button |
| 11 | MicroSD Slot |

INSTALLATION STEPS

Tips: Power strut is in compressed status by default, apply pulling force over 150N can extend strut to desired length(max length 750mm).

Tips: Fine tune bracket fitting position, make sure our power strut using stroke in between 180mm to 240mm. Contact Autoease for support if need further assistance

1. Original car view



2. Remove original hatch panel

* Do NOT remove original gas struts, keep them as original



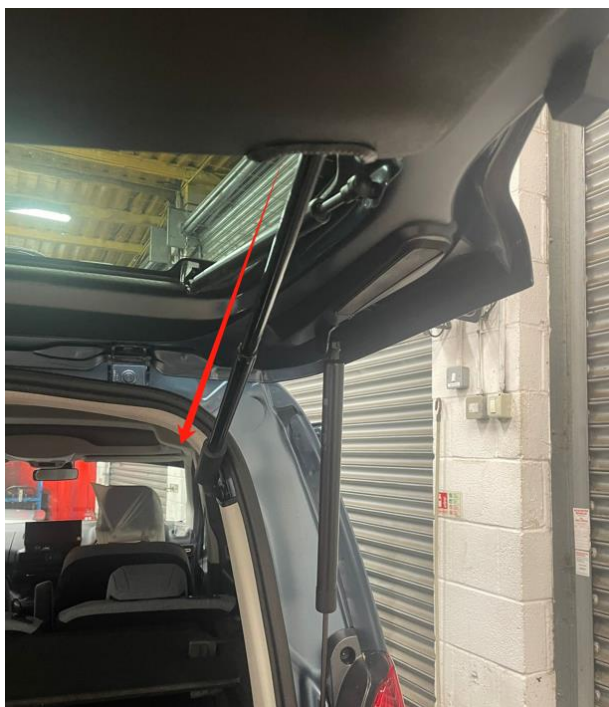
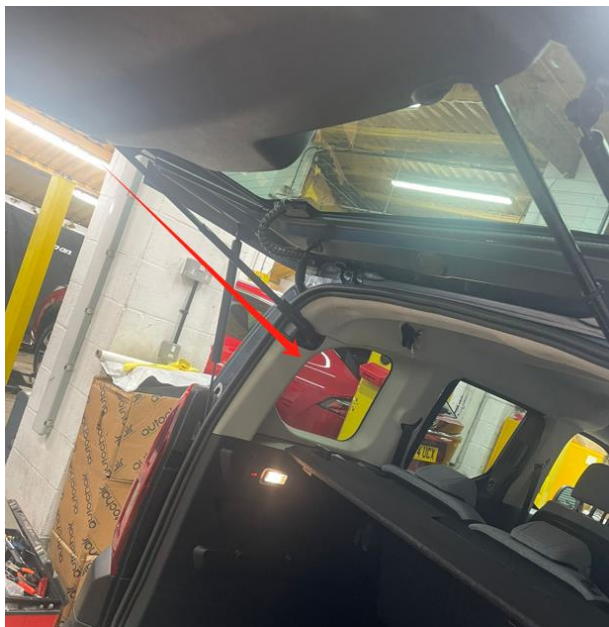
3. Install our trunk brackets on both sides, fix with provided rivet nuts. Note drill two diameter 9mm holes to fix bottom nuts.



4. Install our door brackets on both sides, fix with provided rivet nuts. Note you will need to drill three diameter 9mm holes to fix nuts



Install power struts, cable end at trunk



5. Replace original latch/lock striker to our power striker, fix with original screws, Place striker motor in the left/right side of trunk



6. Route *lock adapter cable from tailgate panel to left side of trunk per red line, picture for reference only



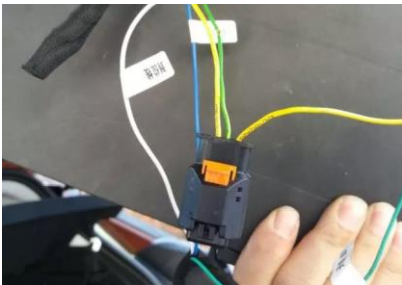
Route power cable from driver's dash to left side of trunk, picture for reference only



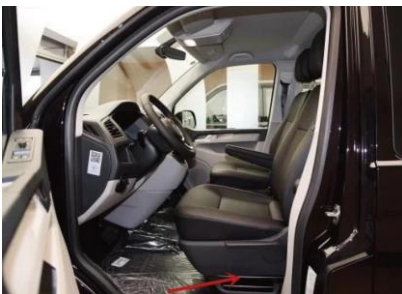
7. Ground our GND wire to a screw in left side of trunk per picture

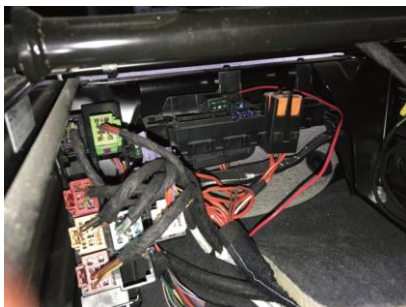


8. Disconnect original lock plugs, re-connect with our lock adapter in between



9. Locate original fuse box under driver's (or passenger's if RHD) dashboard, unplug a 20A or 30A fuse and insert it to our fuse plug, finally insert our power plug to original fuse port





10. Drill a hole to install our front button, picture for reference



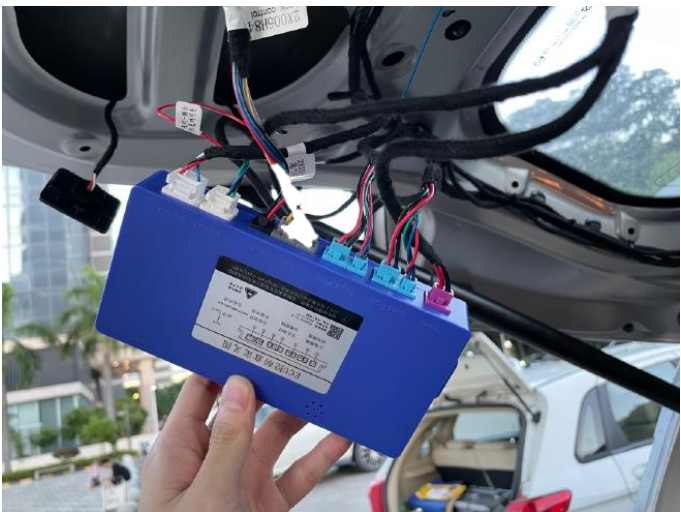
11. Bypass this step if your key fob has a trunk button and it can release original tailgate latch/lock. Otherwise locate original unlock signal inside A pillar



Connect our green wire to original yellow/blue wire for remote control(3x unlock button). Contact Autoease for support in case your wiring set does not look the same as picture



12. Insert all the plugs into the control box (ECU), leave power plug as the last one. Place our control on left/right side trunk, fix it (ECU) with sticker or string tightly



13. Drill a hole in left side of trunk to install our rear button. Restore hatch panel, installation completed



14. INITIALIZE SYSTEM BEFORE USING

Manually lift tailgate to a desired height, keep on pressing our rear button around 4 seconds until a beep is heard, short click our rear button to close, when door is fully closed and you hear a beep, it means the system is initialized and ready for use.

FREQUENTLY ASKED QUESTIONS

1. How to operate the liftgate?

There are four methods as below:

- 1) Use original remote – 3x unlock, or long press trunk
- 2) Use our rear button – 1x
- 3) Use our front button – long press
- 4) Use foot sensor – Sold separately

2. How to setup tailgate height?

Manually lift door to a desired height, long press our rear button until you hear a beep, done.

3. Why there are two beeps when door closing?

- 1) two beep means anti-pinch, check if anything is preventing strut/door movement
- 2) inspect power supply, include positive 12-16v, negative connects, and fuse box

4. Tailgate cannot be closed to the end and not locked

- 1) slightly adjust latch hook position
- 2) reverse left and right strut plugs in control box
- 3) check control box wiring
- 4) must using our screws in the box
- 5) remove rubber lock buffer block in the latch

5. Tailgate can only open to half of the height

- 1) reverse left and right strut plug in control box
- 2) reset tailgate height

6. Original remote/fob does not work

- 1) check our yellow wire connection to original unlock signal
- 2) check OBD connection if kit has a decoder box
- 3) adjust click rhythm
- 4) check OEM vehicle's system settings about unlock signal

7. Front button can open but not close the gate

- 1) check front button wires connection
- 2) check lock adapter (status) signal
- 3) update firmware